



# All Saints National Academy

## PREVENT POLICY

**Policy Review**

This policy will be reviewed in full by the Local Academy Committee on an annual basis.

The policy was last reviewed and agreed by the Local Academy Committee on 27/09/22

It is due for review on 27/09/23 (up to 12 months from the above date).

Signature ..... Date .....

Principal

Signature ..... Date .....

Chair of Local Academy Committee

## **1. POLICY INTRODUCTION**

At All Saints National Academy we endeavour to help everyone achieve their potential. By listening to each other, thinking about what we do, checking our outcomes and always striving to improve we will ensure that everyone can be safe, happy and successful.

**‘Safeguarding vulnerable people from radicalisation is no different from safeguarding them from other forms of harm’  
Home Office – The Prevent Strategy**

## **2. OVERVIEW**

### **The Prevent Duty**

From the 1st July 2015 the Counter Terrorism and Security Act places a new statutory duty on schools, LAs and other specified authorities and institutions, to prevent people being drawn into terrorism and extremism. Since 2012, it has been required by law for teachers “not to undermine fundamental British values, including democracy, the rule of law, individual liberty and mutual respect, and tolerance of those with different faiths and beliefs.”

## **3. POLICY STATEMENT OF INTENT**

All Saints National Academy is fully committed to safeguarding and promoting the welfare of all its pupils. Our first priority is always to ensure the safety and well-being of students in our care. As an academy we recognise that safeguarding against radicalisation is no different from safeguarding against any other vulnerability. All staff are expected to uphold and promote the fundamental principles of British values, including democracy, the rule of law, individual liberty and mutual respect, and tolerance of those with different faiths and beliefs.

The main aims of this policy statement are to ensure that staff are fully engaged in being vigilant about radicalisation; that they overcome professional disbelief that such issues will not happen here and ensure that we work alongside other professional bodies and agencies to ensure that our pupils are safe from harm.

**Prevent is not about identifying or labelling students; it’s about supporting all students and ensuring their safety.**

The principle objectives are that:

- All Staff and Local Academy Committee members will have an understanding of what radicalisation and extremism are and why we need to be vigilant in academy.

- All Staff and Local Academy Committee members will know what the academy policy is on anti-radicalisation and extremism and will follow the policy when issues arise.
- All parents and pupils will know that the academy has policies in place to keep pupils safe from harm and that the academy regularly reviews its systems to ensure they are appropriate and effective

#### **4. KEY TERMS**

The Prevent Duty requires schools to try to prevent people being drawn into extremism and terrorism. So what do these terms actually mean?

##### **What is extremism?**

Extremism is the vocal or active opposition to our fundamental values, including democracy, the rule of law, individual liberty and the mutual respect and tolerance of different faiths and beliefs. We also regard calls for the death of members of our armed forces as extremist.

**Source: Counter Extremism Strategy – October 2015**

##### **What is terrorism?**

Terrorism is defined as action designed to influence the government, intimidate the public, and done for the purpose of advancing a political, religious or ideological cause, that endangers or causes serious violence or harm to people, property, or seriously disrupts or interferes with an electronic system.

**Source: Terrorism Act – 2000**

##### **What is radicalisation?**

Radicalisation is defined as the act or process of making a person more radical or favouring of extreme or fundamental changes in political, economic or social conditions, institutions or habits of the mind. Extremism is defined as the holding of extreme political or religious views

#### **5. PROCEDURES FOR REFERRAL AND CONTACTS**

As stated, all educational professionals are now required by law to refer any concern they have regarding young people being drawn into violent extremism.

A flow chart of referral (see below) is available in the following locations in the academy:-

- Staffroom
- Main office
- Pastoral Office
- Staff Sharepoint Area

**If at any stage you are concerned that a child is at immediate risk of harm you should contact MASH on 0300 5552866.**

**If at any stage you are concerned that there is a threat of violence to an individual or a threat to public safety, then you should contact the police.**

At all other times the normal procedures should be followed. These are detailed over the following pages. But for ASNA staff, the main message is to inform the **Designated Safeguarding Lead – James Dean Executive Principal, Ruth Adamson Head of School or Ben Norton Family Support Worker** of your concern. They will use their expertise and experience to decide if it needs to be referred further.

If you are concerned that a child/young person may be at risk of being drawn towards violence or violent extremism in future:

1. Talk to the family and other professionals working with the child/young person about your concerns and get their views.
2. Seek consent from the parents to complete a MARF. This will get a holistic perspective on the situation and determine if there are additional needs and, if so, how these could be met.
3. Refer to the Multi-Agency Safeguarding Hub (MASH) using the MARF Form

If you have evidence or reason to believe a child or young person may already be engaged in or drawn towards violence or violent extremism or in contact with others who engage in or promote violence, refer to MASH immediately by completing a MARF. In considering such cases, the Channel Panel discussion will include representatives from the Metropolitan Police Prevent team and Children's Social Care who will contribute advice and guidance.

**Niall Markham is the Prevent Coordinator in Walsall and offers support and challenge in relation to the Prevent agenda. To contact Niall Markham please call 01922 655970 or email [Niall.Markham@walsall.gov.uk](mailto:Niall.Markham@walsall.gov.uk)**

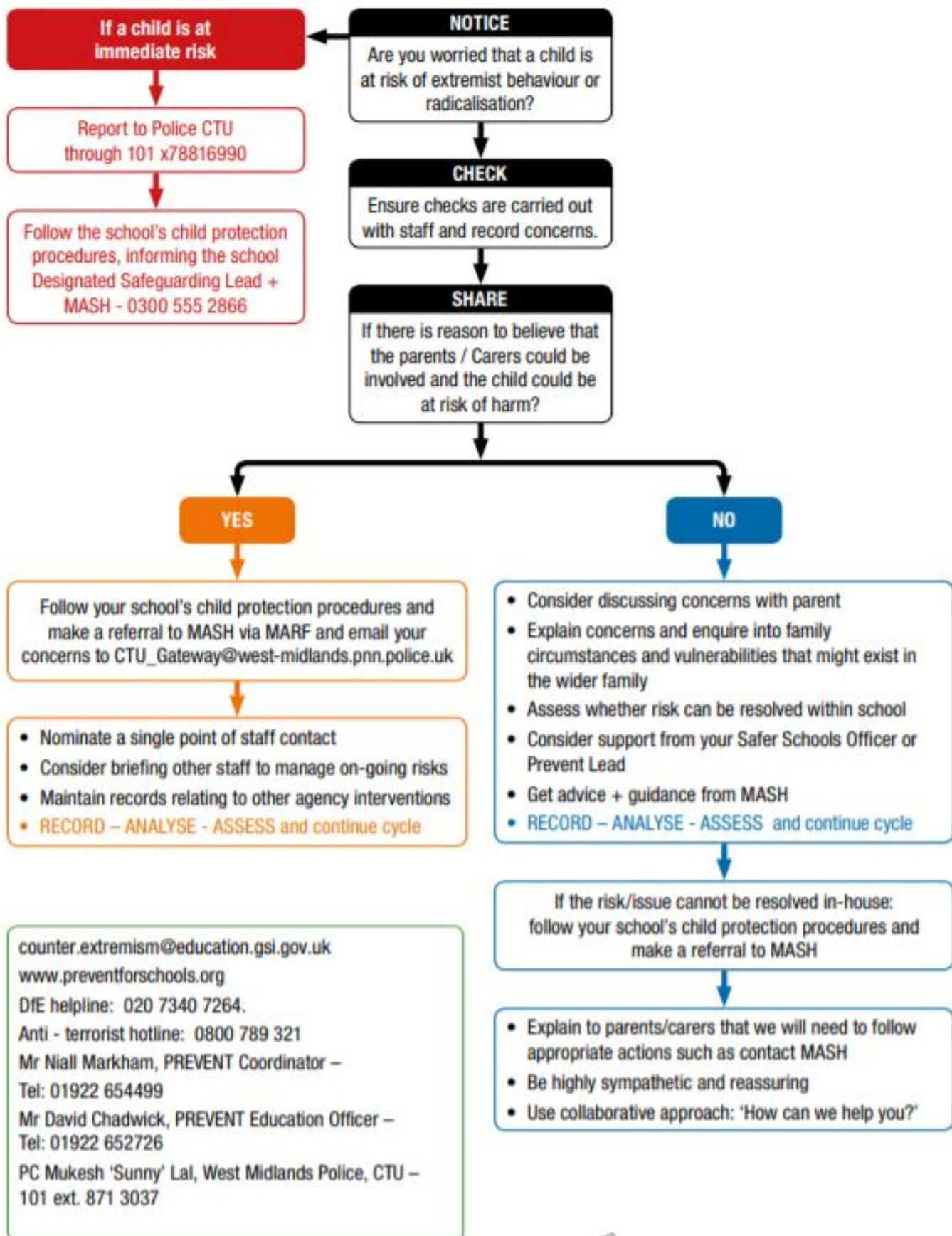
**The Department for Education has set up a helpline for teachers who have questions and/or concerns about extremism. Teachers can call 0207 340 7264 or email: [counter.extremism@education.gsi.gov.uk](mailto:counter.extremism@education.gsi.gov.uk)**

**Anti - terrorist hotline: 0800 789 321**

**Mr David Chadwick, PREVENT Education Officer – Tel: 01922 652726**

**PC Mukesh 'Sunny' Lal, West Midlands Police, CTU – 101 ext. 871 3037**

This flow chart outlines the procedures and referrals:

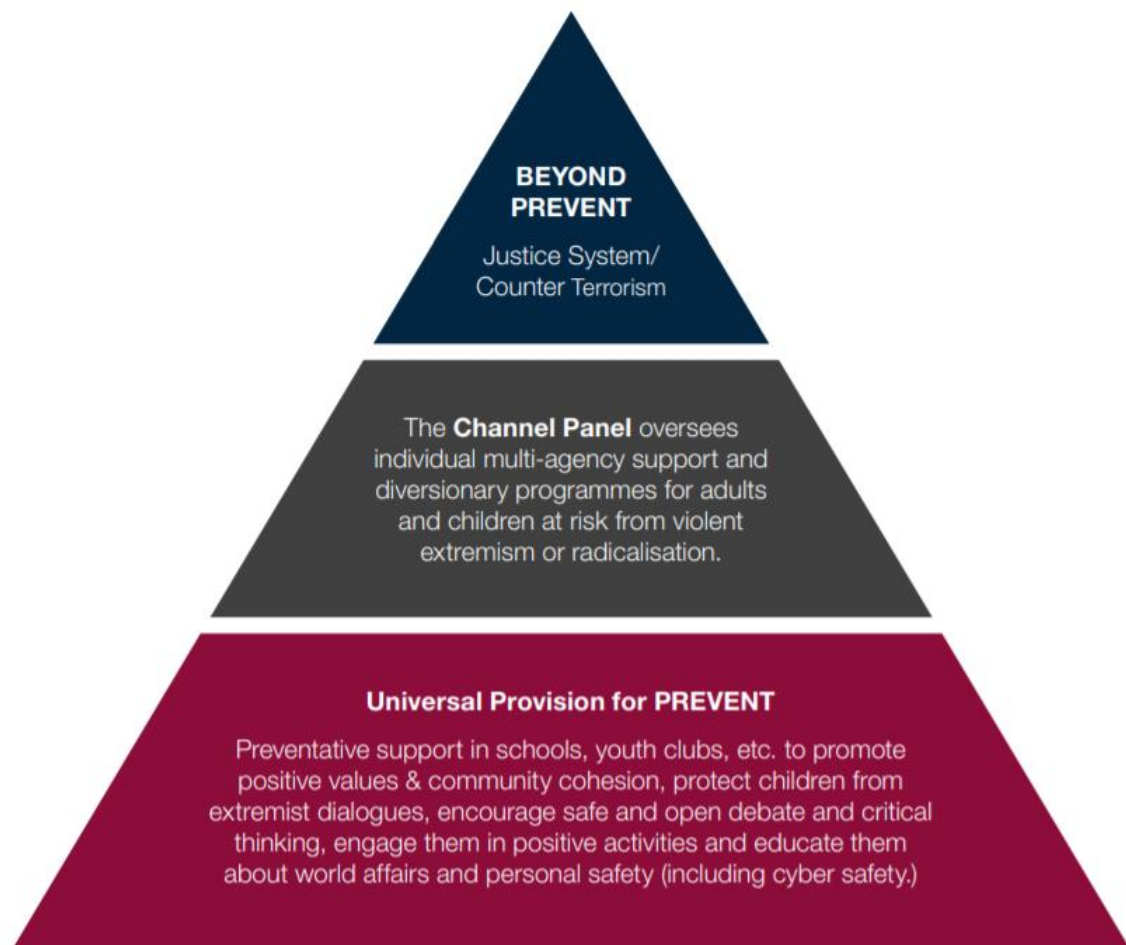


## 6. THE ROLE OF THE CURRICULUM

Because identifying those at risk is so difficult, we take the view that there should be universal provision for young people to help prevent them being drawn into radicalisation. The diagram below shows that most Prevent work happens in the Universal Provision tier.

At All Saints National Academy, our curriculum promotes respect, tolerance and diversity. We are committed to ensuring that our pupils are offered a broad and balanced curriculum that aims to prepare them for life in modern Britain. Children are encouraged to share their views and recognise that they are entitled to have their own different beliefs which should not be used to influence others. Our PSHE (Personal, Social and Health Education), Citizenship and SMSC (Spiritual, Moral, Social and Cultural) provision is embedded across the curriculum, and underpins the ethos of the school. Teaching the schools' core values alongside the fundamental British values supports quality teaching and learning, whilst making a positive contribution to the development of a fair, just and civil society. Children are regularly taught about how to stay safe when using the Internet and are encouraged to recognise that people are not always who they say they are online. They are taught to seek adult help if they are upset or concerned about anything they read or see on the Internet. We can demonstrate that all children are listened to, valued and given the opportunity to become critical thinkers who will be resilient to extremist narratives.

### Prevent Triangle of Intervention



## **7. THE ROLE OF THE LOCAL ACADEMY COUNCIL**

The Local Academy Council (LAC) will undertake appropriate training to ensure that they are clear about their role and the parameters of their responsibilities as Local Academy Councillors, including their statutory safeguarding duties. The LAC will support the ethos and values of our school and will support the school in tackling extremism and radicalisation. In line with the provisions set out in the DfE guidance 'Keeping Children Safe in Education 2018' the governing body will challenge the school's senior management team on the delivery of this policy and monitor its effectiveness.

## **8. RECRUITMENT**

The arrangements for recruiting all staff, permanent and volunteers, to our Academy will follow Walsall's guidance for safer recruitment best practice in education settings, including, but not limited to, ensuring that DBS checks are always made at the appropriate level, that references are always received and checked and that we complete and maintain a single central record of such vetting checks. We will apply safer recruitment best practice principles and sound employment practice in general and in doing so will deny opportunities for inappropriate recruitment or advancement. We will be alert to the possibility that persons may seek to gain positions within our school so as to unduly influence our schools character and ethos. We are aware that such persons seek to limit the opportunities for our pupils thereby rendering them vulnerable to extremist views and radicalisation as a consequence. Therefore, by adhering to safer recruitment best practice techniques and by ensuring that there is an ongoing culture of vigilance within our school and staff team we will minimise the opportunities for extremist views to prevail.

## **9. STAFF TRAINING**

We will ensure that our staff are fully aware of the threats, risks and vulnerabilities that are linked to radicalisation; are aware of the process of radicalisation and how this might be identified early on through safeguarding training, updates, quizzes and the use of the Home Office Prevent eLearning. There are currently 3 packages available:

### **Prevent Awareness**

This offers an introduction to the Prevent duty, and explains how it aims to safeguard vulnerable people from being radicalised to supporting terrorism or becoming terrorists themselves.

<http://www.elearning.prevent.homeoffice.gov.uk>

### **Prevent Referrals**

This package builds on the Prevent awareness eLearning training. It is designed to make sure that when we share a concern that a vulnerable individual may be being radicalised,

that the referral is robust, informed and with good intention, and that the response to that concern is considered, and proportionate.

<https://www.elearning.prevent.homeoffice.gov.uk/preventreferrals>

### **Channel Awareness**

This training package is for anyone who may be asked to contribute to, sit on, or even run a Channel Panel. It is aimed at all levels, from a professional asked to input and attend for the first time, to a member of staff new to their role and organising a panel meeting.

<https://www.elearning.prevent.homeoffice.gov.uk/channelawareness>

### **10. USEFUL LINKS**

Educate Against Hate <http://educateagainsthate.com/>

DFE Helpline 020 7340 7264

The Prevent Strategy <https://www.gov.uk/government/publications/prevent-strategy-2011>

The Prevent Duty Guidance <https://www.gov.uk/government/publications/prevent-duty-guidance>

[www.preventforschools.org](http://www.preventforschools.org)

Channel Duty Guidance

[https://assets.publishing.service.gov.uk/government/uploads/system/uploads/attachment\\_data/file/907614/Channel\\_Duty\\_Guidance\\_April\\_2015.pdf](https://assets.publishing.service.gov.uk/government/uploads/system/uploads/attachment_data/file/907614/Channel_Duty_Guidance_April_2015.pdf)

Prevent Guidance for Walsall Schools

[https://link.walsall.gov.uk/Portals/18/NewsLetters/Prevent%20Guidance%20for%20Walsall%20Schools%20Jan%202020\\_.pdf?ver=2020-01-31-100353-817&timestamp=1580465051906](https://link.walsall.gov.uk/Portals/18/NewsLetters/Prevent%20Guidance%20for%20Walsall%20Schools%20Jan%202020_.pdf?ver=2020-01-31-100353-817&timestamp=1580465051906)

Prevent E-Learning <https://www.elearning.prevent.homeoffice.gov.uk/edu/screen1.html>

Early Help Team <https://www.mywalsall.org/walsallearlyhelp>

Early Help Partnership Tool <http://go.walsall.gov.uk/forms/on-line-tool/>

Imams online <http://imamsonline.com/>

Report Hate Crime <http://www.report-it.org.uk/home>.

Prevent Parent Leaflet:

[https://link.walsall.gov.uk/Portals/18/LA/Safeguarding/Prevent%20-%20Information%20for%20Schools/567-2016-04-01-0303-4646-Prevent\\_Leaflet\\_for\\_families.doc](https://link.walsall.gov.uk/Portals/18/LA/Safeguarding/Prevent%20-%20Information%20for%20Schools/567-2016-04-01-0303-4646-Prevent_Leaflet_for_families.doc)